

LLL Lasting  
Legacies

Continue your  
life of giving.

LLL  
Lasting  
Legacies

*Leave  
more than  
memories  
behind*



Finance  
with a  
mission

Have peace of mind  
that you are in control  
of what you leave...

Leave  
more than  
memories  
behind



## *What is a will?*

Your Will is a written statement explaining how you would like your property and money distributed after you die.

### **Some points to consider about making a Will:**

If you don't make out a Will your property and money will be distributed under the Rules of Intestacy. This may be quite different from the way you would want it distributed. Either an Administrator or the Public Trustee will have to take charge of your estate.

Consider a Christian preamble to your Will. Remember that everything you have comes from God. Your Will is a final way of showing your love and thanks to Him for all the blessings you have been given in your lifetime.

In thanks to God consider naming the LLL as a beneficiary in your Will. Legacies enable the LLL to provide additional valuable help to the Lutheran Church of Australia (LCA) in its mission and ministry.

Remember to inform your family of your intentions.

## *Why leave a legacy to the LLL?*

After making provision for your loved ones, you may wish to leave some of your estate to the LLL.

By naming the Lutheran Laypeople's League in your Will, you can be sure that your gift will continue to provide support for mission and ministry beyond your lifetime.

In contrast to other charitable donations you might make, the amount you give as a legacy to the LLL is never spent. The income generated from the legacy enables the

LLL to provide a grant based on your gift each year to support LCA projects forever. So your legacy will continue to support Church projects year after year, and the capital amount you give will never be depleted.

*Your will should make fair provision for your family.*

# Leaving a legacy to the LLL?

Here's what to do...

## Christian preamble.

Christians who prepare a Will may like to share their true wealth, the knowledge of the forgiveness of sins and eternal life through faith in Jesus Christ.

A Christian preamble to your Will gives you an ideal opportunity to share this belief with your family and friends.

Prayerfully consider using the following Christian preamble in your Will, or as a guide to writing your own.

### Christian preamble:

As a baptised child of God, I am in His care. I am secure in His love for me and trust in the salvation purchased for me through Jesus' suffering and death. Be comforted that I have died in this Christian faith and have now joined my Lord in eternal life. I encourage you, my loved ones, to place your faith and trust in Jesus alone. I urge you not to set your hopes on worldly riches, but to take hold of real life through faith in Jesus Christ.

## What do you write when wording a Will?

To leave a gift to the LLL, the following wordings can be used in your Will:

### General Legacy

I give to the Lutheran Laypeople's League (ABN 25 044 678 441), of 175 Archer Street, North Adelaide, South Australia,

.....

*(insert your gift amount. This can be an amount of money, a percentage or portion of your estate, a property or other specific items).*

to be used by the League in support of the mission and ministry of the Lutheran Church of Australia. \_\_\_\_\_ OR \_\_\_\_\_

### Legacy to a particular LLL Permanent Fund

I give to the Lutheran Laypeople's League (ABN 25 044 678 441), of 175 Archer Street, North Adelaide, South Australia,

.....

*(insert your gift amount. This can be an amount of money, a percentage or portion of your estate, a property or other specific items).*

to be used by the League in support of the mission and ministry of the Lutheran Church of Australia through the

.....

*(insert the name of the specific fund/s).*

Permanent Fund of the League. \_\_\_\_\_ OR \_\_\_\_\_

### Legacy to a particular Lutheran entity using the LLL Special Purposes Fund

I give to the Lutheran Laypeople's League (ABN 25 044 678 441), of 175 Archer Street, North Adelaide, South Australia,

.....

*(insert your gift amount. This can be an amount of money, a percentage or portion of your estate, a property or other specific items).*

to be used by the League in support of the mission and ministry of the

.....

*(insert the name of Lutheran entity or congregation/parish name).*

through the Special Purposes Permanent Fund of the League. \_\_\_\_\_

Express your love and respect in a lasting way...

LLL  
Lasting  
Gifts



## *Donations.*

### **Give a lasting gift**

At any time you can make a donation to the LLL which will provide assistance to support the Lutheran Church of Australia (LCA).

The LLL has been blessed with donations from supporters who have felt the need to help the Church, or a specific LCA ministry or project. These donations have often been as a result of a windfall gain through sale of property or by having sufficient money to still provide a donation after all family members have been considered.

If you feel moved to provide support in this way and would like more information, please feel free to contact our CEO directly. All enquiries will be treated in confidence.

Alternatively, a donation can be made online by credit card through LCA Online Donations.

### **In Memoriam Donations**

The passing of a loved one allows us to pause and reflect on the memories they have left behind. With an In Memoriam donation, you have the opportunity to express your love and respect in a lasting way, ensuring that they are never forgotten.

The LLL encourages giving an In Memoriam donation either in lieu of, or in addition to, flowers.

Donations to the LLL are not tax deductible.

*Your gift  
lives  
beyond your lifetime  
and continues  
your life of  
giving*

# LLL Permanent Funds.

## Helping to continue your life of giving.

You can choose to contribute towards various Permanent Funds. Each Fund supports a specific area of ministry within the LCA. So you can nominate a particular ministry you want to support through your gift, and the grant provided will support that ministry's objectives.

In addition, the LLL Special Purposes Permanent Fund allows you to nominate any LCA ministry which you wish to support, be it national, district or local.

### **Australian Lutheran World Service (ALWS) Support Fund**

#### Aid and development assistance for developing countries

Australian Lutheran World Service (ALWS) is how the Lutheran family in Australia and New Zealand reaches out to help people hurt by poverty and injustice in developing countries. Tens of thousands of people in countries like South Sudan, Burundi and Cambodia benefit. ALWS provides clean water, healthy food, schools, village banks and rice banks, and care for people with disabilities. When natural disasters happen, ALWS also channels emergency care to those most in need. A special focus is welcome for refugees fleeing conflict and danger - whether they arrive in UN camps in Kenya, or at Lutheran congregations in Australia. Through ALWS you can help love come to life for some of the most disadvantaged - yet bravest - people in the world. Find out more at [www.alws.org.au](http://www.alws.org.au)

### **Church Worker Support Fund**

#### Supporting the work of lay people

There are many gifted lay workers and volunteers serving within the LCA who are called to ministries of spreading the Word of God to all people. Lay workers serve in areas including cultural specific ministry, mission & outreach, chaplaincy, school ministry, camping, ministry support, pastoral care, child & family, youth & young adult, community care, parish nursing, and worship & music. They are truly God's hands and feet bringing love to life in our communities. The LCA's Church Worker Support Department supports the development of lay ministry in the LCA by assisting congregations in the employment, development and training of lay workers and volunteers.

### **International Mission Support Fund**

#### Answering the Great Commission, partnering in mission and ministry overseas

LCA International Mission exists to equip, encourage and engage people in gospel partnerships in God's mission in the world - as individuals, congregations and schools, nationally, regionally and together with our overseas partner churches. LCA International Mission, under the Office of the Bishop, works in partnership with overseas Lutheran churches so that through the work of the Holy Spirit we can bring the life-changing news of the gospel to people overseas and cross-culturally in Australia and New Zealand.

To read the stories of God at work in and through these gospel partnerships and to learn about how you can become involved in God's mission through LCA International Mission check out the website [www.lcamission.org.au](http://www.lcamission.org.au)

### **Local Mission Funds**

#### **Lutheran Media Support Fund**

#### Communicating Christ's message of hope through media

Lutheran Media reaches out and connects to people through media with the good news of Jesus Christ. More than 1,000,000 radio listeners around Australia, New Zealand, and the world hear *Message of hope* every week. People in desperate need receive a *Message of hope* over the internet, including through social media like Facebook. Contemporary outreach resources are produced, offered and shared, and make a real difference in the lives of many people. More details are available on the website [www.lutheranmedia.org.au](http://www.lutheranmedia.org.au)

#### **Local Mission Support Fund**

#### Going and growing as God's people

This fund (which is an amalgamation of the Home Mission Fund and the Mission Personnel Fund) supports the work of the New and Renewing Churches and Cross-Cultural Ministry departments, as they support local mission activities undertaken by congregations, parishes and LCA communities. It assists in developing a missional culture where individuals, families and communities are inspired, passionate and active in sharing the gospel in word and action. The fund also supports new mission initiatives (e.g. new church plants) in the initial stages of their development.

For more information visit the Local Mission website [www.lca.org.au/departments/local-mission/](http://www.lca.org.au/departments/local-mission/)

### **Child, Youth & Family Support Fund**

## Helping to grow leaders in child, youth and family ministry

The LCA Committee for Child, Youth and Family Ministry (Grow Ministries) provides encouragement to children, young people and their families to remain faithful to God and to reach out to others with the good news of Jesus.

A strong child, youth and family ministry is essential for mission and the future growth of our Church. Strong leadership is needed to ensure that programs are put in place to train more people for ministry in congregations, districts and the LCA. Through this Fund, resources can be provided to coordinate and provide child, youth and family ministry activities to facilitate this training. For more information visit the Grow Ministries website [www.growministries.org.au](http://www.growministries.org.au)

### **Ministry Support Fund**

## Supporting priority projects and ministry-related activities

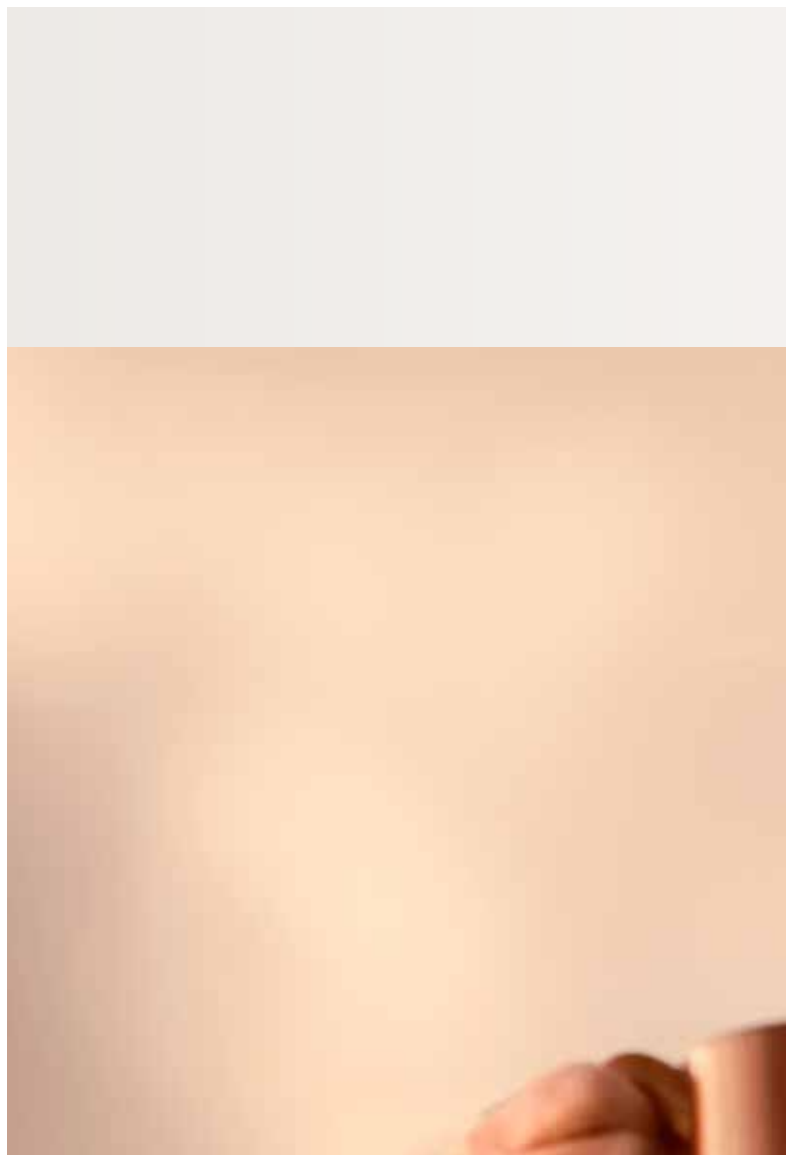
Grants provided through this fund are used at the discretion of the LCA to support current priority projects, ministry support activities and mission-related programs.

### **Training and Development Support Fund**

## Enabling church workers and lay people to build their capacity to serve in the church

The LCA provides scholarships to church workers and lay people in order to assist them to pursue training and development opportunities so that they are better equipped for service within the Church.

Scholarships are not restricted to any particular area of training or study (e.g. theology). However, scholarship applicants must demonstrate that the chosen study program will support them in their current area of ministry service, or equip them for service in the future.



## ***LLL Special Purposes Fund.***

If you have looked at all the other Permanent Funds and cannot see one to fit the LCA ministry you want to support...

Then the Special Purposes Fund is for you. You can choose whichever LCA ministry you want to support.

Perhaps you are thinking of an LCA national ministry like Australian Lutheran College or Lutheran Tract Mission. Perhaps an LCA district ministry like community care or youth ministry. Perhaps you are thinking more locally with an LCA ministry like a congregation, school or care facility.

### **Nominate the specific ministries you wish to support**

The Special Purposes Fund provides a facility through which donors are able to nominate specific ministries of the Lutheran Church of Australia (LCA) that they wish to support. These ministries may be at LCA national level, LCA district level or LCA local

level (local congregation, school, care facility). Annual benefits will be paid direct to the nominated ministries.

*Leave  
more than  
memories  
behind*



*Giving your  
earthly gifts more  
lasting  
purpose*

